

PRÉ ESCOLAR ALDINO LÉO SCHEID

AVALIAÇÃO DE PORTUGÊS

PROFESSORA : TATIANA PIONER

ALUNO(A).....

1 – ESCREVA AS VOGAIS.

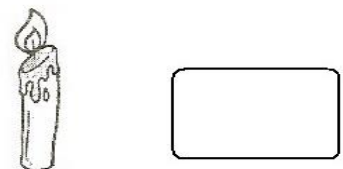
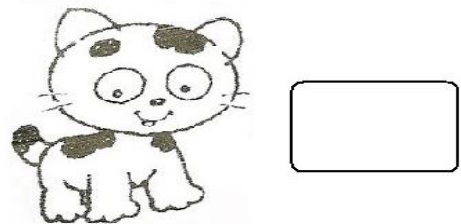
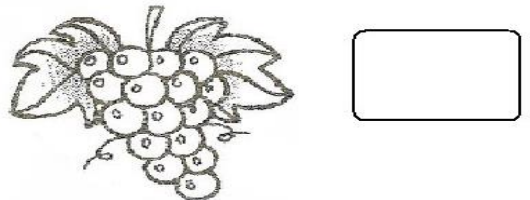
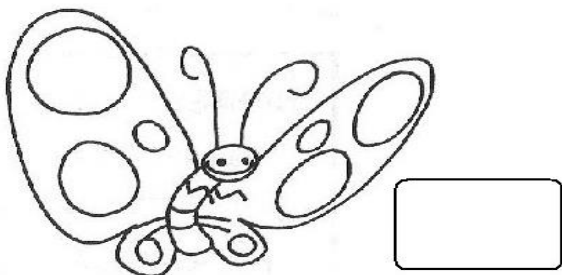
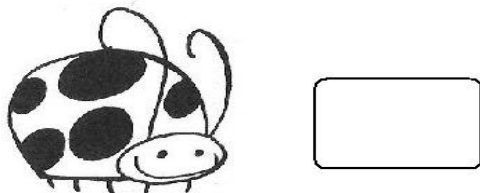
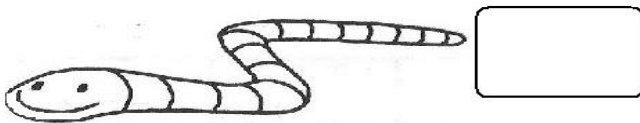
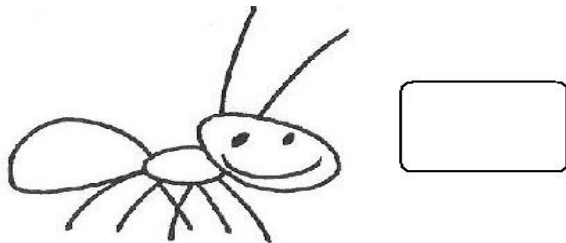
.....

2- ESCREVA 5 PALAVRINHAS QUE VOÇÊ JÁ SABE:

.....

.....

3 – QUAL A LETRA INICIAL DO NOME DOS DESENHOS.



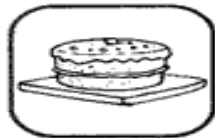
4- COMPLETE OS NOMES DAS FIGURAS USANDO SOMENTE AS VOGAIS.



B _ _ L _ _



B _ _ L _ _



B _ _ L _ _



B _ _ L _ _



P _ _ T _ _



P _ _ T _ _



G _ _ T _ _



G _ _ T _ _



_ _ V _ _



_ _ V _ _



G _ _ L _ _



G _ _ L _ _



B _ _ L _ _ N Ç _ _

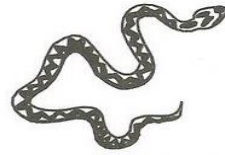
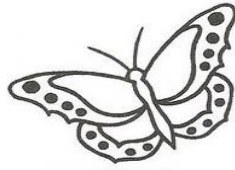
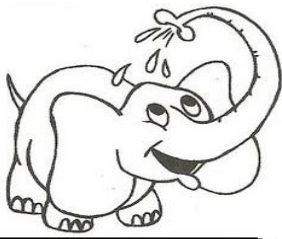


B _ _ L _ _ _ _ _

5- COMPLETE ABAIXO AS LETRAS QUE ESTÃO FALTANDO:

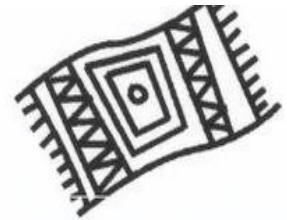
A			D		F			I			L	
N		P						V				Z

6 ESCREVA O NOME DS DESENHO ABAIXO:



7- LIGUE CERTO:

PETECA



BONECA



CASA



TAPETE



8- DESCUBRA A PALAVRA SECRETA:



DESCUBRA A PALAVRA, ESCRIVENDO A LETRA INICIAL DO NOME DE CADA DESENHO.

ENIGMA



--	--	--	--	--	--

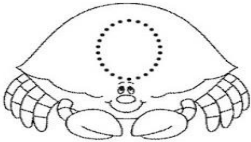
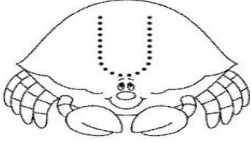
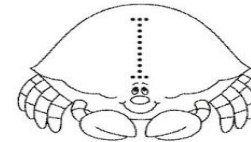
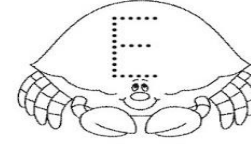
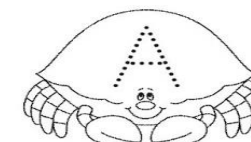



--	--	--	--	--	--



--	--	--	--	--	--

9-CIRCULE NO QUADRO APENAS AS PALAVRAS INICIADAS PELA LETRA DETRO DE CADA SIRI:

	ÓCULOS OVO	AVE ÍNDIO	UVA OLHO
	EVA AMOR	IVO URSO	ILHA UVA
	ILHA UM	OSSO IVAN	AVE ÍNDIO
	ÓCULOS OVO	AVE ÍNDIO	UVA OLHO
	ALICE ELEFANTE	ERVILHA AMOR	ILHA OSTRA



10- DESENHE:

A) BOLA

B) BICO

C) FLOR

D) COELHO